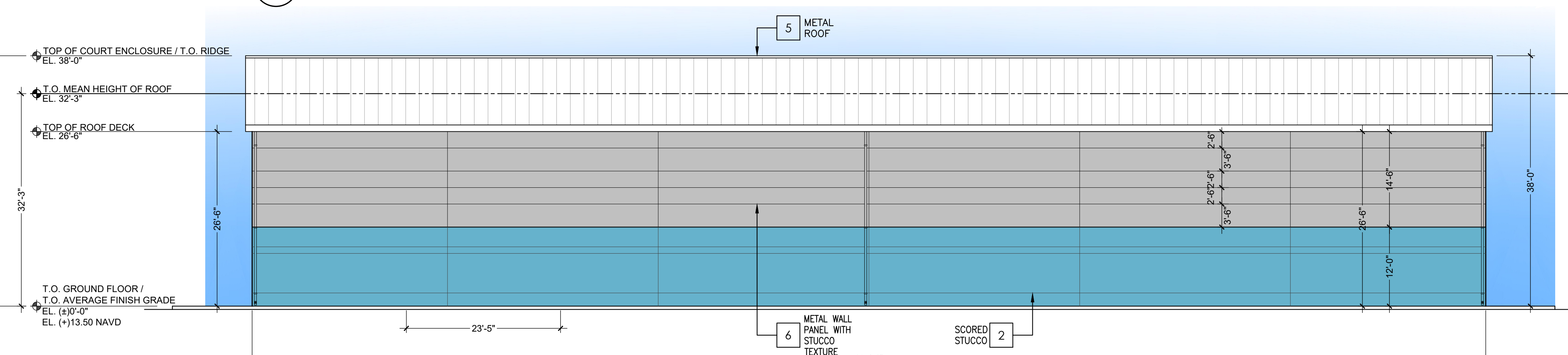
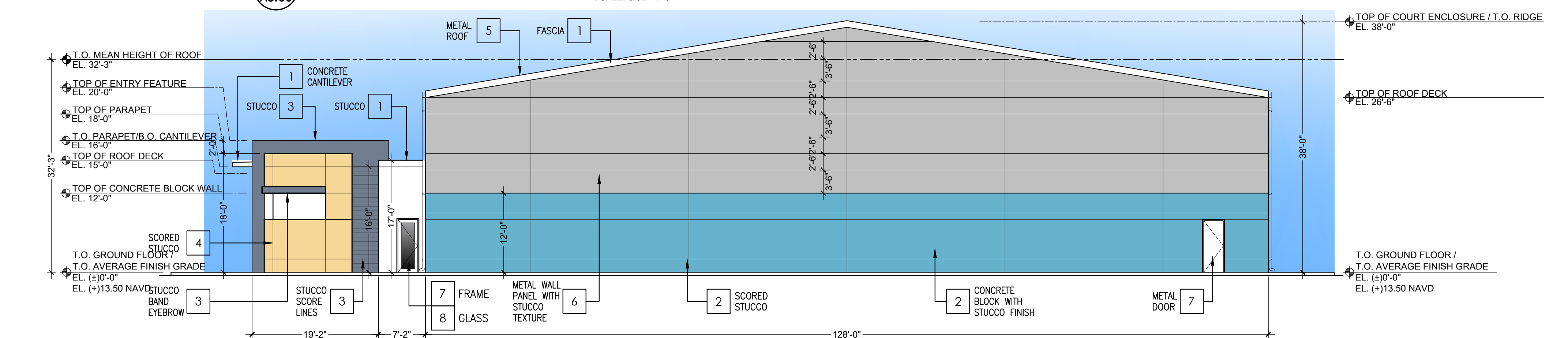


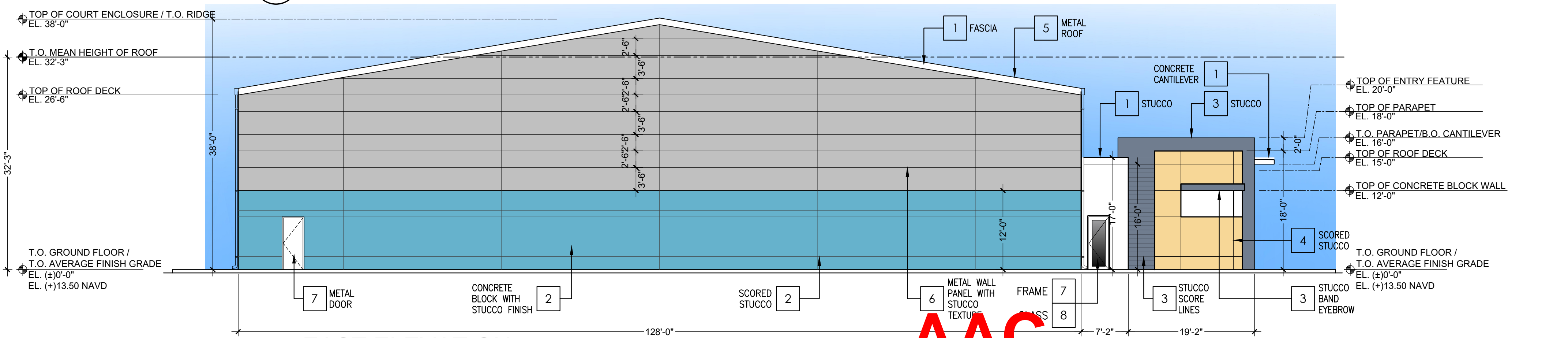
1 NORTH ELEVATION
A3.00 SCALE: 3/32"=1'-0"



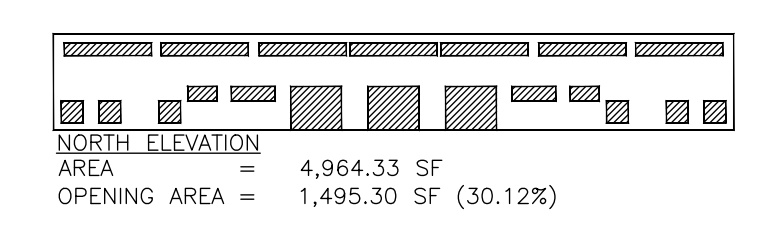
2 SOUTH ELEVATION
A3.00 SCALE: 3/32"=1'-0"



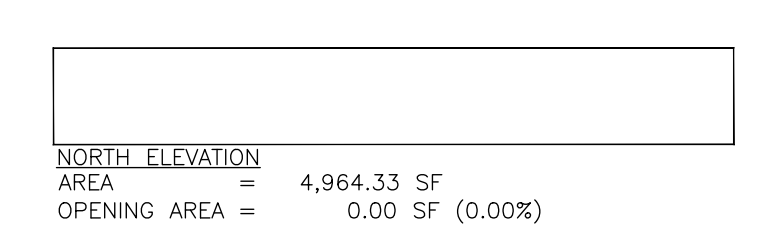
3 WEST ELEVATION
A3.00 SCALE: 3/32"=1'-0"



4 EAST ELEVATION
A3.00 SCALE: 3/32"=1'-0"



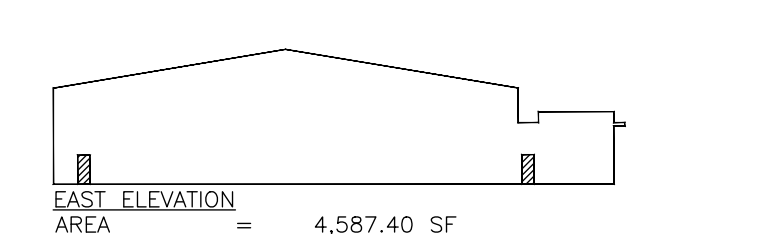
NORTH ELEVATION
AREA = 4,964.33 SF
OPENING AREA = 1,495.30 SF (30.12%)



SOUTH ELEVATION
AREA = 4,964.33 SF
OPENING AREA = 0.00 SF (0.00%)



WEST ELEVATION
AREA = 4,587.40 SF
OPENING AREA = 53.88 SF (1.17%)



EAST ELEVATION
AREA = 4,587.40 SF
OPENING AREA = 53.88 SF (9.95%)

COLOR CHART	
1	PRODUCT: Exterior Acrylic Paint MANUFACTURE: Benjamin Moore COLOR: Snow White MODEL: BM OC-66, SATIN
2	PRODUCT: Exterior Acrylic Paint MANUFACTURE: Benjamin Moore COLOR: Poolside MODEL: BM 775, SATIN
3	PRODUCT: Exterior Acrylic Paint MANUFACTURE: Benjamin Moore COLOR: Hale Navy MODEL: BM HC-154, SATIN
4	PRODUCT: Exterior Acrylic Paint MANUFACTURE: Benjamin Moore COLOR: Happily Ever MODEL: BM 173, SATIN
5	PRODUCT: Standing Seam Metal Roofing MANUFACTURE: Nucor-Kirby Building System COLOR: Regal White MODEL: Loc Seam Standing Seam Note: Finish
6	PRODUCT: Insulated Metal Wall Panel with embossed stucco texture MANUFACTURE: METL-SPAN COLOR: Light Gray Color MODEL: Tuff Cote for Tuff Walls Panels
7	PRODUCT: Powder Coat MANUFACTURE: PPG Envirocon COLOR: Pure White MODEL: RAL 9010
8	PRODUCT: Impact Glass MANUFACTURE: WinDoor Inc. COLOR: Clear (Glass)



PMS 143-F1B434-PANTONE PMS 143 C-Leaves
PMS 128-F3D54E-PANTONE PMS 128 C-Outer Circle and Center Fill
PMS 638-20AFD7-PANTONE PMS 638 C-Inner Blue Green Circle
PMS 141-F2C681-PANTONE PMS 141 C-Text

REVISIONS	
1. DRC COMMENTS	09.27.23
2. DRC COMMENTS	12.08.23
3. DRC COMMENTS	08.21.24
4. DRC COMMENTS	10.07.24
5.	
6.	
7.	
8.	
9.	
10.	



FLORIDA INDOOR TENNIS
POMPAHO BEACH, FL 33069

3000 NORTH MILITARY TRAIL SUITE 209
BOCA RATON, FLORIDA 33431
PHONE 561-391-0081 FAX 561-391-0085
EMAIL mail@rwb-arch.com

RWB
Linare
ARCHITECTURE

PROJECT # 21-035
DATE PER ISSUANCE
SHEET # 3
A3.00
JUAN C. LINARES

AAC

PZ23-12000009

03/05/2025

AA26000640